



Australian Government

Great Barrier Reef
Marine Park Authority



Management of the Great Barrier Reef

Virtual Learning Experiences

Program overview:

The Great Barrier Reef is internationally recognised for its outstanding beauty and biological diversity, which is reflected in its status as a World Heritage Area. Conserving the Reef's biodiversity is not just desirable - it is essential. The Great Barrier Reef Marine Park Authority is responsible for managing the Great Barrier Reef Marine Park to ensure it is protected for the future. During this session you will gain an appreciation of the enormity of the Great Barrier Reef Marine Park, the multiple uses that occur within it, the challenges it is facing and how it is cooperatively managed, making it arguably the best managed natural resource on planet Earth.

Please note: this program can be tailored to suit students' learning needs and curriculum requirements.

Program duration: 60 minutes

Program cost: AUD \$155.00 (Inc. GST)

Australian Curriculum Links:

Year	Subject	Code
8	Geography	ACHGK048 ACHGK052
9	Science	ACSSU176
10	Science	ACSSU189
10	Geography	ACHGK070
Senior	Biology	ACSBL008 ACSBL011 ACSBL028
Senior	Earth and Environmental Science	ACSES105 ACSES106
Tertiary	Natural Resource Management	
Tertiary	Environmental Management	

Cross-curricular priorities:



Sustainability



Aboriginal and
Torres Strait Islander
Histories and Cultures

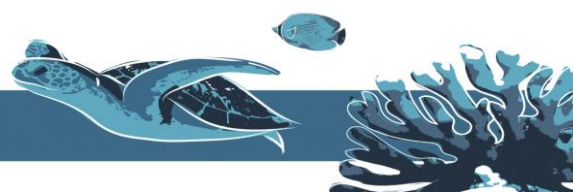
How do I book?

Complete the [Booking Request Form](#) and email it to education@gbmpa.gov.au.

Note: your booking is not confirmed until you receive a booking confirmation email from the Reef Education team.

Questions?

Please refer to our [Virtual Learning Experiences](#) page, or email education@gbmpa.gov.au.





Australian Government

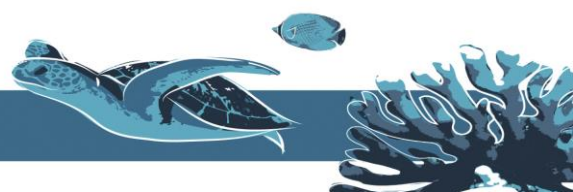
Great Barrier Reef
Marine Park Authority



Management of the Great Barrier Reef program outline:

Runtime: 60 minutes *Timings are indicative only.

	Time Allocation (minutes)	Outline	Teacher Notes
Pre-presentation Set Up	5 minutes prior to session start time	Audio Visual Check	Camera – teacher to set up the camera so presenters can see students. Microphone – check that microphone is connected and working. If one class is connecting , leave the microphone unmuted so that presenter can ask questions throughout the session. If multiple classes are connecting , please mute your microphones and host will advise teacher to unmute during question time.
Welcome and Introduction	0-3 min (3 min)	Meet the Reef Education host. Acknowledgement of Country. Explain format of the session.	Acknowledgement of Country – if known teacher/student could acknowledge the First Nation people’s country where they are situated.
Overview of the Great Barrier Reef	3-13 min (10 min)	Overview of the Great Barrier Reef: <ul style="list-style-type: none"> • Great Barrier Reef World Heritage Area • Great Barrier Reef Marine Park • Ecosystems within the World Heritage Area • Biological diversity within the World Heritage Area 	Teacher to help facilitate questions throughout the session by picking a student with their hand raised to answer and by unmuting and muting microphone if required.
Multiple uses of the Great Barrier Reef Marine Park	13-28 min (15 min)	Overview of the main commercial and non-commercial use within the Great Barrier Reef Marine Park with a focus on: <ul style="list-style-type: none"> • Tourism • Recreational use • Fishing • Ports and shipping • Traditional use 	
Threats to the Reef	28-43 min (15 min)	Introduction to the top four threats to the Reef: <ol style="list-style-type: none"> 1. Climate Change 2. Coastal Development 3. Land use run-off (including marine debris) 4. Direct use (legacy effects of overfishing and poaching). <p>As part of this component, we explain some of the initiatives that are in place to help mitigate these threats.</p>	





Australian Government

Great Barrier Reef
Marine Park Authority



SEE THE
LOVE THE
PROTECT THE **REEF**

Managing the Great Barrier Reef Marine Park	43-53 min (10 min)	Overview of the key tools that are used to help manage the Great Barrier Reef Marine Park. <ul style="list-style-type: none"> • Building ecosystem resilience • Integrated management approach • Who's involved in Management? • Marine Park Zoning • Reef 2050 Long-term sustainability plan • Reef blueprint for resilience. 	
How can you help to protect the Reef?	53-58 min (5 min)	Discussion of simple everyday behaviours to reduce our contribution to climate change and marine debris.	
Final messages	58-60 min (2 min)	The presenter will close with a summary.	

To explore other Reef related teaching and learning resources check out our [Reefed resources page](#).

