

Name

Date

Organisation

Type your answers in the boxes. When you are finished, go to the File menu and choose 'Save as' (not 'Save'!) to keep a copy of your answers.

**1** On the Rapid Monitoring form, in which category would you put this animal?

- A** Sea cucumber
- B** Giant clam
- C** Butterflyfish
- D** Grazing herbivores



**2** On the Rapid Monitoring form, in which category would you put this fish?

- A** Anemonefish
- B** Butterflyfish
- C** Grazing herbivores
- D** Cods and groupers



**3** On the Rapid Monitoring form, in which category would you put this fish?

- A** Cods and groupers
- B** Coral trout
- C** Maori wrasse
- D** Shark



**4** On the Rapid Monitoring form, in which category would you put these fish?

- A** Anemonefish
- B** Butterflyfish
- C** Grazing herbivores
- D** Coral trout



**5** On the Rapid Monitoring form, in which category would you put this fish?

- A** Grazing herbivores
- B** Cods and groupers
- C** Coral trout
- D** Maori wrasse



**6** On the Rapid Monitoring form, in which category would you put these fish?

- A** Grazing herbivores
- B** Cods and groupers
- C** Shark
- D** Maori wrasse



**7** On the Rapid Monitoring form, in which category would you put these animals?

- A** Sea cucumber
- B** Giant clam
- C** Anemonefish
- D** Cods and groupers



**8** On the Rapid Monitoring form, in which category would you put these fish?

- A** Anemonefish
- B** Butterflyfish
- C** Grazing herbivores
- D** Coral trout



**9** Identify the turtle species shown in the photo.

- A** Loggerhead turtle
- B** Hawksbill turtle
- C** Leatherback turtle
- D** Green turtle



**10** On the Rapid Monitoring form, in which category would you put this fish?

- A** Grazing herbivores
- B** Cods and groupers
- C** Coral trout
- D** Maori wrasse



**11** Identify the species shown in the photo.

- A** Sea cucumber
- B** Giant clam
- C** Grazing herbivores
- D** Turtle



- 12** On the Rapid Monitoring form, in which category would you put this fish?
- A** Grazing herbivores
  - B** Cods and groupers
  - C** Coral trout
  - D** Maori wrasse

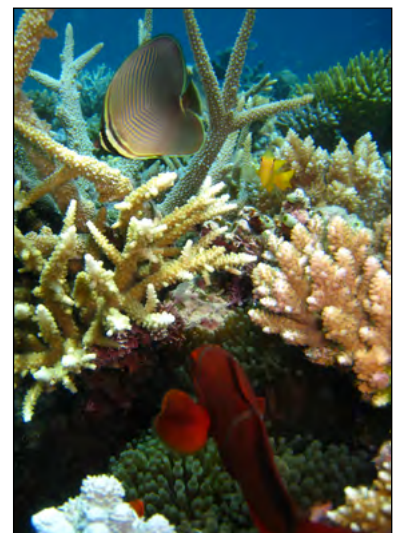


- 13** Where are you most likely to find a sea cucumber?
- A** Swimming through the water
  - B** In an anemone
  - C** On the sand
  - D** On top of a staghorn coral

- 14** On the Rapid Monitoring form, in which category would you put this fish?
- A** Anemonefish
  - B** Butterflyfish
  - C** Grazing herbivores
  - D** Coral trout



- 15** On the Rapid Monitoring form, in which category would you put these fish?
- A** Coral trout and Anemonefish
  - B** Butterflyfish and Sea cucumber
  - C** Cods and Groupers
  - D** Anemonefish and Butterflyfish



**16** Identify the shark shown in the photo.

- A** Blacktip reef shark
- B** Epaulette shark
- C** Whitetip reef shark
- D** Hammerhead shark



When you are finished, go to the **File** menu and choose 'Save as' (not 'Save') to keep a copy of your answers.

## Module 2 – Review Questions – Answer summary

Name

Date

Organisation

The answers you enter on the previous pages will also appear here. This makes it easier to mark the answers, or you can print the page first so you can answer with pen on paper.

**1**

**9**

**2**

**10**

**3**

**11**

**4**

**12**

**5**

**13**

**6**

**14**

**7**

**15**

**8**

**16**

When you are finished, go to the File menu and choose 'Save as' (not 'Save') to keep a copy of your answers.