

## Challenge Activities

### Leopard Sharks

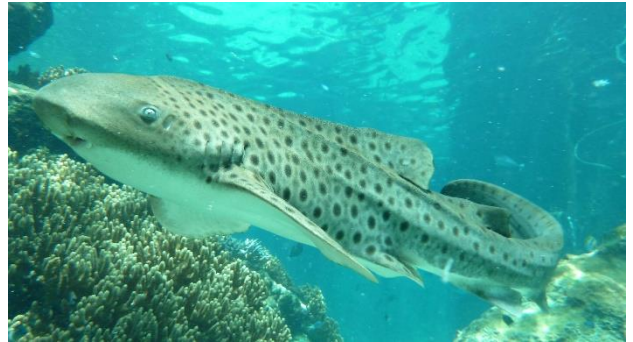
Find the missing word in the text below:

The female shark \_\_\_\_\_ her egg to  
the seafloor using a special \_\_\_\_\_  
trailing from the egg's side.

The egg should be safe from \_\_\_\_\_  
and currents until it hatches in six months.

After \_\_\_\_\_ the shark pup must fend  
for itself. The parents don't raise their  
\_\_\_\_\_.

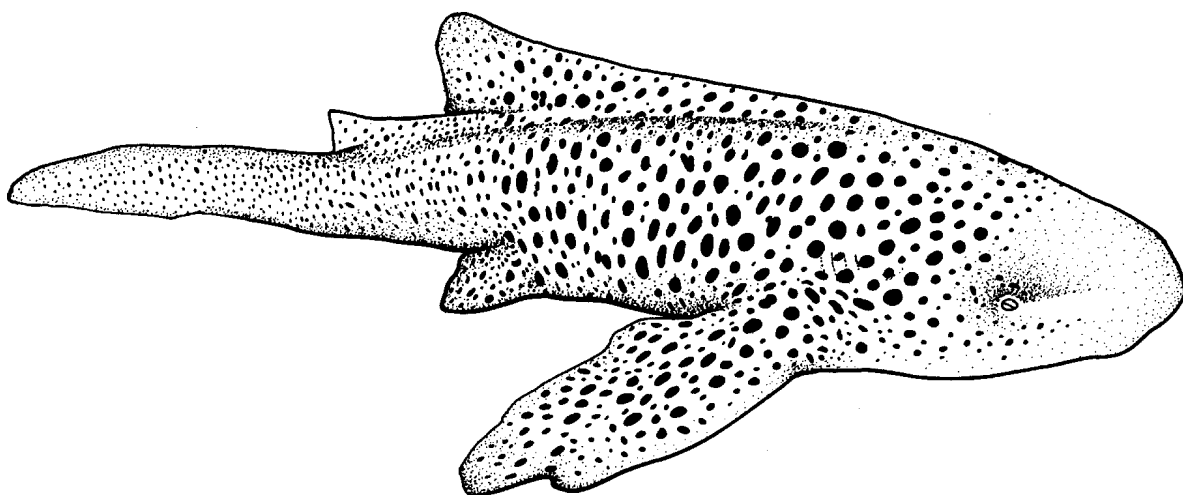
The pups \_\_\_\_\_ and patterns change quickly as it gets older.



Adult Leopard shark.



Leopard shark pup hatching from egg case.



**WORDS:** hatching colours attaches offspring predators ribbon